

By: **The KCC Environment Board**
Cabinet Member for Environment and Regeneration Nick Chard
Mike Austerberry – Managing Director EHW

To: Environment, Highways & Waste Policy Overview Committee 15
September 2009

Subject: A summary of progress in delivery of KCC's environmental
commitments including climate change and the implementation of
the KCC Environment Policy – 6 Monthly Update.

Classification: Unrestricted

Summary: This paper provides a six monthly update of KCC's progress in
fulfilling its sustainability and climate change commitments,
including implementation of the KCC Environment Policy.

Recommendation: That Members:-

- a. Note and discuss progress to date
 - b. Discuss and agree approach for engaging Members, in particular from
Environment, Highways and Waste Directorate (EHW).
-

1. Introduction

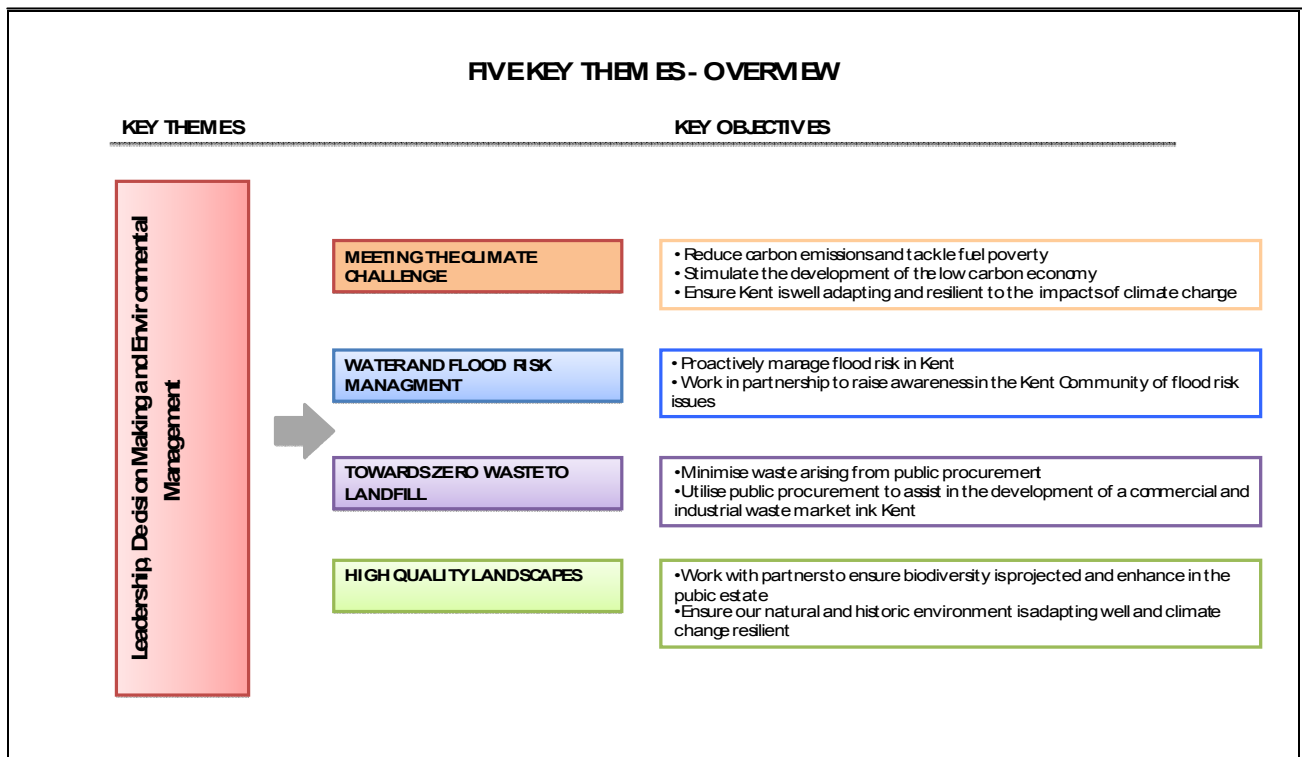
- 1.1. The KCC Sustainability and Climate Change Team are required on behalf of the KCC Environment Board and Climate Change Cabinet Working Group to report to each POC on a six monthly basis regarding the progress in delivery of KCC's sustainability and climate change commitments, including implementation of the KCC Environment Policy. The last report was at the March E&R POC and gave a full summary of progress. This paper will update on any significant developments and new initiatives and opportunities.
- 1.2. Annex 1 illustrates the key policy and legislative drivers for KCC. A more detailed summary of the policy context can be found in the March 09 POC Paper. A significant recent development is the launch of the Governments 'Low Carbon Transition Plan' which outlines how the Government is planning to meet its climate change commitments.
- 1.3. KCC's current programme of activity focusing on Five Themes has been informed by the national policy and legislative context as well as local priorities. The five themes are
 - Theme 1 – Leadership, Decision Making and Environmental Management
 - Theme 2 – Meeting the Climate Challenge
 - Theme 3 – Flood Risk Management
 - Theme 4 – Towards Zero Waste to Landfill
 - Theme 5 – High Quality Landscapes

Figure 1 summarises the current approach, more detail is available on request.

The KCC Environment Policy has 6 key strands Our Decisions, Our Estate, Our Procurement, Our Construction, Our Workforce and Community Leadership all of which are covered in the themes above. A copy of the KCC Environment Policy has been attached for ease of reference.

- 1.4. There are significant challenges, not least maintaining momentum in the face of an economic recession and a shrinking public purse. Reduction of carbon emissions, and ensuring KCC and Kent is well adapting to climate change as well as primed to take advantage of any emerging 'climate opportunities' will remain the main focus of the programme, and indeed is interrelated with all five of the themes.

Figure 1 – Key Themes



2. Significant Developments

- ISO14001 accreditation – Since reporting at the last Environment and Regeneration POC in March, KCC has achieved full accreditation to ISO14001. The task now will be to embed the system in decision making processes and mainstream into everyday business, as well as incorporating climate risk priorities.
- Procurement – KCC were successful in winning European Regional Development Fund funding worth almost £400k (Low Carbon Economy Project) to support the KCC supply chain in making environmental efficiency savings and carbon reductions. This will enable Kent businesses to improve their competitiveness and access new business opportunities in an increasingly environmentally aware market and economy.

- The Kent Carbon Hub – Through the European Funding mentioned above, KCC now has the capacity to develop an online support system to enable businesses to assess their carbon footprint, access additional targeted support and network with other like minded businesses through the use of a ‘Facebook’ style networking tool. The Kent Carbon Hub will not only allow business to improve their performance, but also to show case their achievements and provide signposting to new economic opportunities.
- Kent Local Climate Change Impacts Profile for Kent (LCCLIP) – KCC undertook a broad brush Local Climate Change Impacts Profile (LCCLIP) in 2007, which examined the possible impacts of climate change such as severe weather events on Kent in the coming years. Through accessing funding from Improvement and Efficiency South East (EISE) KCC is now able to work with all 12 Kent Districts to turn the pilot project into a much more detailed Kent wide approach. KCC are one of only a few authorities taking such a comprehensive, cutting edge approach. The results of the study will be available this Autumn.
- Coreflo – Through funding from the Environment Agency, KCC has secured a one year post to work with businesses to help them identify flood risks and prepare for future flooding events to minimise damage and loss of business. This post will be located in KCC but will work very closely with the Environment Agency, Business Support Kent and the Business Link programme.

3. Specific Progress and the Role of EHW

- 3.1. EHW continue to play a key role in driving this agenda forward. The Sustainability and Climate Change Team sits in the Environment and Waste Division and is responsible for coordinating and driving forward KCC’s programmes and activity in this area, particularly in relation to providing the Secretariat for the Environment Board, leading on the ISO14001 programme and developing ‘sustainable business’ initiatives such as the above mentioned ERDF Low Carbon Economy Project, the Kent Carbon Hub and the Coreflo post.
- 3.2. Significant carbon and financial savings continue to be made through the Sustainable Transport Programme and the Energy Water Investment Fund (EWIF) which are hosted by EHW. Annually Kent Journey Save saves 1000 tonnes of CO₂ and the EWIF 1210 tonnes and £201, 781 annually.
- 3.3. In addition, EHW continue to improve on their progress under the ISO14001 programme, and have now included Kent Highways Service and the Kent Highways Alliance in the accreditation. Kent Highways Services are currently developing a number of initiatives and this will be reported on in the end of year report.

4. Communication and Member Engagement

- 4.1. A formal Corporate Environmental Report linked to the ISO14001 programme is currently being produced and will be put on KNET in the Autumn. This document will bring together KCC’s overall progress in this area, and set out the next 3 years activity plan.

- 4.2. Specific climate change information and communications can be found on KNET and Kent Connects www.kentconnects.gov.uk/climatechange. A senior decision makers climate change pack has also been produced and will be published on KNET and Kent Connects this Autumn.
- 4.3. The KCC Climate Change Cabinet Working Group, comprising Alex King (Chair), Nick Chard (EHW) and Kevin Lynes (E&R) meets as needed, usually on a quarterly or six monthly basis and provides a strong steer to the Climate Change Programme. The Programme as a whole is steered by the KCC Environment Board.
- 4.4. More targeted Member training and engagement initiatives, including the possibility of setting up a broader Member Group are being considered. Feedback from the EHW POC on the most appropriate ways of engaging Members would be much appreciated.

5. Conclusion

- 5.1. Kent County Council continues to make good progress towards the implementation of the KCC Environment Policy and achievement of KCC's sustainability and climate change commitments. However, significant challenges do remain, and every effort will be need to maintain momentum and make the step change approach needed if KCC is to continue to deliver on its commitments.

6. Recommendations

Members are asked to:

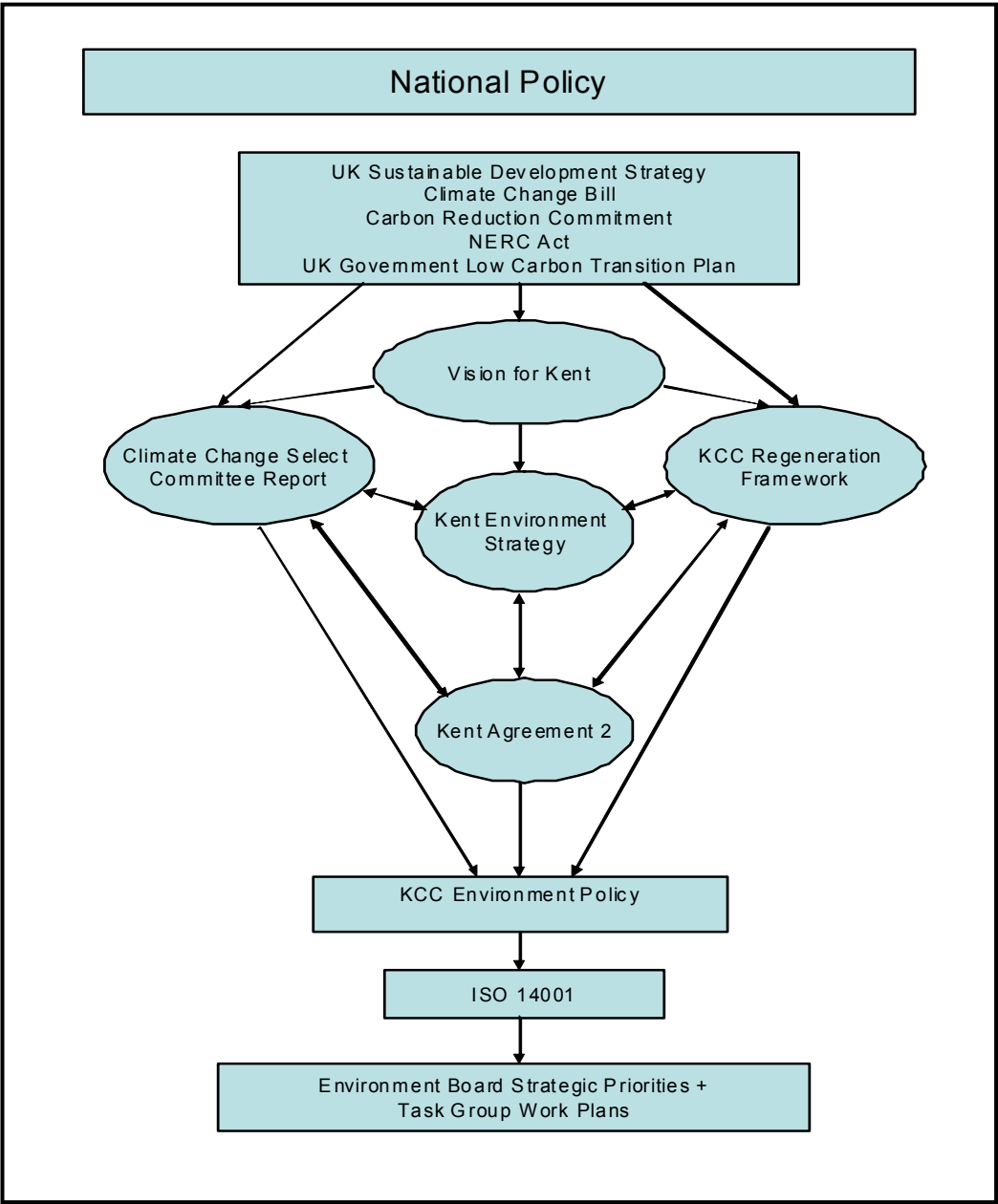
- a. Note and discuss progress to date
- b. Discuss and agree approach for engaging Members, in particular from **Environment, Highways and Waste Directorate (EHW) as outlined in Section 4.**

Lead officer contact:
Carolyn McKenzie
Greener Kent Manager
Environment, Highways and Waste
Extension 1916

Background Papers:

- E&R POC Paper – September 2008, March 2009.

Annex 1: Current Policy and Legislative Context



Annex 2: Kent County Council Environment Policy

At Kent County Council, elected members and staff alike recognise that protection and enhancement of the environment is the key to sustaining a high quality of life in Kent. We recognise that our own activities have an impact on the environment, that we have a responsibility to ensure that these impacts are positive, and that our use of natural resources is minimised.

Our vision

To stabilise and progressively reduce our environmental footprint; to progressively reduce our carbon dioxide emissions and make sure our estate and services are adapted to the future impacts and opportunities of climate change; and to contribute positively to Kent's character, local environmental quality and natural environment

We will do this by applying an evidence led approach to sustainability, identifying the potential for cost savings wherever possible and committing to environmental policies and standards in the following areas:

Our decisions

We will:

- Expect every manager and decision-maker in KCC to demonstrate how they comply with this Policy
- Integrate environmental considerations into our strategic and day-to-day decision-making processes, and give significant weight to them where they conflict with other objectives
- Assess key decisions for their environmental impact, taking a pragmatic whole-life-cost view, and use such assessments to fully inform decision-making
- 'Climate proof' decisions to ensure they reduce our contribution to climate change and help us prepare for the impacts and opportunities of unavoidable climate change, including where appropriate enabling biodiversity and coastal areas to adapt to climate change in line with the KCC Climate Change Action Plan
- Continue to comply with all relevant environmental legislation and statutory duties
- Seek to embrace new environmental technology and methodologies to ensure we are at the leading edge of developments and solutions, within a well-managed risk-analysis and cost-benefit framework

Our estate

We will:

- Reduce energy use within our estate to meet carbon reduction targets of 10% by 2010 and 20% by 2015
- Increase the proportion of the energy needs of our existing estate met from renewable sources
- Reduce water use by 7.5% by 2010 across our estate

- Reduce waste generation across our estate by 10% by 2010, and increase the proportion of our corporate waste which is reused or recycled to 50% by 2010
- Maximise the efficient use of land in our Estate by reusing previously developed land and buildings wherever practical, before using greenfield land.
- Protect, enhance and restore biodiversity, the natural and historic environment within both our buildings and open space, including measures that support climate change adaptation
- Minimise light, noise, air and other forms of pollution arising from our estate
- Ensure KCC-owned highways comply with the relevant parts of this Policy

Our travel and transport

We will:

- Reduce our members and employees' need to travel, including through our estate strategy, locations selected for council events, use of public transport, teleconferencing and other sustainable solutions
- Achieve reductions in total business mileage travelled by employees, encourage greater car sharing and other sustainable solutions, without adversely affecting end-user service delivery
- Promote the use of fuel efficient vehicles and technologies through our vehicle fleet and lease car scheme

Our procurement

We will:

- Increase the proportion of goods and services sourced locally where there are environmental or employment benefits and in compliance with broader UK and EU purchasing legislation
- Work with our suppliers to ensure that they are taking action to reduce the environmental impacts of their businesses
- Identify those goods, including timber and paper, which can be obtained from certified sustainable sources and ensure that these supplies are used
- Work with suppliers to develop markets for environmental technologies, goods and services

Our construction

We will:

- Meet high standards of sustainable construction in all new KCC buildings and refurbishments, and in all developments on KCC-owned land. The BREEAM 'very good'/Code for Sustainable Buildings level 3 or equivalent standard is required as a minimum
- Require all new KCC buildings and refurbishments to assess the feasibility of developing on-site renewable energy to help meet energy needs
- Ensure that our estate and roads are planned and managed in ways which minimise the risk of flooding and do not increase the risk of flooding elsewhere
- Seek to avoid adverse impacts on biodiversity and comply with policy and legislative requirements

Our workforce

We will:

- Ensure that our members and employees understand the implications of environmental legislation and regulation, and exceed minimum environmental standards where possible
- Ensure that environmental awareness is raised and good environmental behaviour encouraged through our corporate training, performance appraisal and reward strategies
- Raise awareness of how to comply with all relevant environmental legislation and statutory duties

Our leadership role in the community

We will:

- Lead Kent's communities to a better understanding of the importance of our environment and help them value and enhance the environment locally and globally
- Set out and deliver a vision of environmental excellence with our partners in the Kent Partnership through regular review and implementation of the Kent Environment Strategy

We will set out detailed action plans and guidance for delivery of these commitments, so that colleagues across KCC have a clear basis for decision-making.

This Policy is owned by the KCC Environment Board who may choose to call decision-makers to account for compliance with these commitments and escalate as necessary to the Leader and Chief Executive. Any proposed exceptions to this Policy will need to provide a sound business case based on whole-life economic, social and environmental costs and benefits.

Kent County Council's Corporate Environmental Performance Group will oversee provision of advice and support, monitoring and reporting. In particular, the Group will lead embedding of these commitments in ISO14001 accreditation for the County Council as a whole by 2010. The Group will report via the KCC Environment Board to the Leader and Chief Executive.



Paul Carter
Leader

Peter Gilroy
Chief Executive

Published December 2007

This Policy and its successful implementation will be reviewed annually by the KCC Environment Board, escalating any changes as necessary to the Leader and Chief Executive.